



# AUTOMOTIVE

---

## APPAREL GUIDE



TESTED RIGHT.  
DONE RIGHT.





DONE RIGHT.™







## THE WORLD LEADER IN AUTOMOTIVE APPAREL

Since 1923, Red Kap has been creating comfortable, durable workwear for the “done right” crowd. We know they need to get plenty of mileage out of their workwear. With our history, expertise and understanding of the automotive industry, we’ve developed uniform programs for most of the world’s great automotive companies. Our garments are designed to withstand the unique conditions of the automotive industry. We use industrial-grade buttons, stain-resistant technology and fabric tough enough to stand up to industrial laundering.

The Red Kap label means details that help the automotive worker get the job done right—extra touches like covered plackets to keep buttons from scratching a gleaming finish and straight hems to keep you looking sharp. No wonder Red Kap is the world leader in automotive apparel. After all, we know what it takes to get a job done right. The right workwear. And a generous helping of elbow grease.

ACURA

Audi

EQUUS®

Ford

HONDA

HYUNDAI

INFINITI

LINCOLN®

LEXUS®

MAZDA

Mercedes-Benz

MINI

MOPAR®

NISSAN

Quick Lane

SUBARU

TOYOTA

Volkswagen

VOLVO





DONE RIGHT.™



## WHY RED KAP?

Red Kap provides automotive workwear in a wide array of sizes and colors, with enough customization options to build a complete workwear program. With our wide range of products and industry-specific details, you know you're not just getting a new garment ... you're getting a garment done right.



Through our Imagine It® program, we take customization to a new level. Whether you need embroidery, name patches, or striping, Imagine It® makes it easy to customize the entire crew. Good work speaks for itself, and customization speaks for your company.



VF Imagewear, Inc.

NAUTICA

THE  
NORTH  
FACE

VANS

Wrangler

JANSPORT®

Lee®

## WHO IS VF IMAGEWEAR?

VF Imagewear is the leading supplier of apparel for the work force. We deliver outstanding customer service experiences through our services platform, innovative products and compelling brands. Plus, we're a division of VF Corporation, the world's leading supplier of branded apparel. With brands like Wrangler®, Lee®, The North Face®, Nautica®, Jansport® and Vans® just to name a few, we know what it takes to outfit a workforce of 16 million.



# nuts and bolts

It's more than just hard-working workwear. The Red Kap automotive collection is designed for the work you do everyday in the shop, under the hood, behind the wheel. Stronger seams. More durable fabrics. Pockets in just the right places. With so many features that get the job done right, our automotive workwear does everything but drive.

## SHIRTS



### SmartPlacket

Buttons stay neatly hidden so your car's paint job stays polished and protected. That's more than smart – it's genius.

### Hex Pocket

Corner-free pockets resist dirt and lint buildup. Strategically placed bartacks add extra strength to prevent rips. The only thing you'll have to patch is a tire.

### Versa Hem

A straight bottom hem offers a versatile fit with maximum comfort and style, whether it's a tucked in or tucked out kind of day.

## ALL PRODUCTS



### DuraSeams

Double-stitched seams provide maximum strength. Go ahead, run on all cylinders.

### SewStrong

Bartacks with angled stitching take the strain to prevent rips. Because you'd rather be in the shop than at the tailor.

## PANTS



### Triple Grip System

With the zipper locked in place, on track and reinforced with bartacks, you can straighten up and fly right.

### Roll Stop

With a waistband designed to lie flat and hold its shape, you stay comfortable and polished from the first engine to the last transmission.



### Fabric

Touchtex™ Technology with soil release keeps garments clean, moisture wicking keeps you dry and cool, and wrinkle resistant options give you one less thing to worry about.

## TESTED RIGHT. DONE RIGHT.

Every Red Kap garment must pass rigorous testing for proof of excellence in design, engineering and construction. That's the done right guarantee.



# *Fit for the* **WHOLE CREW.**

Our Crew Shirt may be new to you, but it's no stranger to hard work. Field tested for durability and comfort, it's been proven to have everything it takes to get the job **DONE RIGHT**.



- A** | **New Industrial Laundry Ripstop fabric** stays cool while looking sharp
- B** | Our **SmartPlacket** keeps any paint job protected
- C** | **Color block design** masks stains from the toughest of jobs
- D** | **Button-through pockets** keep items in place
- E** | **Versa hem** makes an untucked shirt look professional
- F** | **Storage utility pocket** with double pencil stall is an unexpected bonus
- G** | **Hex-style pockets** reduce lint and dirt collection
- H** | **Sewn-in collar stays** reinforce a polished look
- I** | **Moisture wickable, soil release and superior color retention** make this shirt fit for any crew

the crew shirt



# CREW SHIRT

4.25 oz., 65% Polyester / 35% Cotton Ripstop Texture

**SY20** Short Sleeve. (Reg) S-3XL. (Long) L-2XL.

**SY10** Long Sleeve. (Reg) M-3XL. (Long) L-2XL.

<b>CG</b> charcoal body / grey contrast	<b>CR</b> charcoal body / royal blue contrast	<b>BR</b> black body / red contrast	<b>BC</b> black body / charcoal contrast



# Ready for the track, AND THE GARAGE.



the motorsports shirt

Grease, oil and dirt don't stand a chance against our Touchtex™ Technology, and the color block styling is classic automotive.

- A** | **Durable fabric** constructed to hold color wash after wash
- B** | **Wickable fabric** moves perspiration away from the body
- C** | **Abrasion-resistant fabric** stays smooth and pill ball free to maintain a professional image
- D** | With **wrinkle-resistant fabric** – just wash, hang and wear
- E** | **Permanent collar stays** for a crisp appearance
- F** | **Longer body length** keeps shirt tucked in and crew looking professional
- G** | **Button-thru pockets** keep personal items in check
- H** | **Side color panels** provide a slimming, athletic look for various body types
- I** | **Unique shoulder color block design** for a more modern look



## MOTORSPORTS SHIRT

4.25 oz. Poplin, 65% Polyester / 35% Cotton

SP28 Short Sleeve. (Reg) S-5XL. (Long) M-3XL.

SP18 Long Sleeve. (Reg) S-5XL. (Long) M-3XL.



BG black body /  
grey contrast

RN navy body /  
red contrast

NP navy body /  
postman blue contrast





## A | PERFORMANCE TECH SHIRT

A banded collar with sewn-in stays knows its place, while Touchtex™ technology puts the brakes on dirt and grease.

4.25 oz. Poplin, 65% Polyester / 35% Cotton

**SP24GM** Short Sleeve. (Reg) S-3XL.

**SP14GM** Long Sleeve. (Reg) S-3XL. (Long) M-2XL.

## B | TECH SHIRT

A classic. Touchtex™ technology keeps your shirt clean while you get your hands dirty.

4.25 oz. Poplin, 65% Polyester / 35% Cotton

**SP24AC** Short Sleeve. (Reg) S-4XL. (Long) M-3XL.

**SP14AC** Long Sleeve. (Reg) S-4XL. (Long) M-4XL.

## C | CLASSIC AUTO SHIRT

Choose from 21 colors. Touchtex™ technology means you'll look clean, no matter how greasy the job. A left pocket pencil stall keeps you ready for action.

4.25 oz. Poplin, 65% Polyester / 35% Cotton

**SP24** Short Sleeve. (Reg) S-6XL. (Long) M-5XL.

Sizes vary by color.

**SP14** Long Sleeve. (Reg) S-4XL. (Long) M-5XL.

Sizes vary by color.

<b>BK</b> black	<b>BY</b> burgundy	<b>CB</b> chocolate brown	<b>CH</b> charcoal
<b>DB</b> dark blue	<b>GY</b> grey	<b>KK</b> khaki	<b>LA</b> light grey
<b>LB</b> light blue	<b>LG</b> light green	<b>LT</b> light tan	<b>MB</b> petrol blue
<b>NV</b> navy	<b>OR</b> orange	<b>PB</b> postman blue	<b>RB</b> royal blue
<b>RD</b> red	<b>SG</b> spruce green	<b>SV</b> silver grey	<b>WH</b> white
<b>YE</b> yellow			

## D | WRINKLE-RESISTANT AUTO SHIRT

Play it straight in a shirt that won't wrinkle under pressure. Classic styling with a button front, two functional pockets and left pocket pencil stall keep this shirt working hard all day.

6 oz. Twill, 100% Wrinkle-resistant Cotton

**SC40** Short Sleeve. (Reg) S-4XL. (Long) L-4XL.

**SC30** Long Sleeve. (Reg) S-5XL. (Long) L-2XL.

(X Long) L-4XL.

<b>DN</b> dark navy	<b>GG</b> graphite gray	<b>KH</b> khaki	<b>LB</b> light blue
<b>NV</b> navy	<b>OR</b> orange	<b>PB</b> postman blue	<b>SG</b> spruce green
<b>WH</b> white			





## A | TEAM SHIRT

A true work shirt with pocket flaps and left pocket pencil stall, this popular style also offers a pre-cure durable press for less ironing and creates a great look when paired with our Team Pant.

5.25 oz. Twill, 65% Polyester / 35% Cotton

ST62 Short Sleeve. (Reg) S-4XL.

ST52 Long Sleeve. (Reg) S-4XL. (Long) L-2XL.

## B | TEAM PANT

Our Team Pant perfectly matches our Team Shirt and comes in six different colors.

8.5 oz. Twill, 65% Polyester / 35% Cotton

PT62 28-56.

Available colors for Team Shirt and Team Pant.

BK black	CH charcoal	KH khaki	NV navy
OG olive green	SV silver		

## C | HEATHERED TECH SHIRT

Clean and crisp meet durability. Pocket flaps and tortoise shell buttons accent a pressed finish that requires less ironing.

4.25 oz. Heathered Poplin, 65% Polyester / 35% Cotton

SH20 Short Sleeve. (Reg) S-3XL.

SH10 Long Sleeve. (Reg) S-3XL. (Long) L-2XL.



CH charcoal NV navy

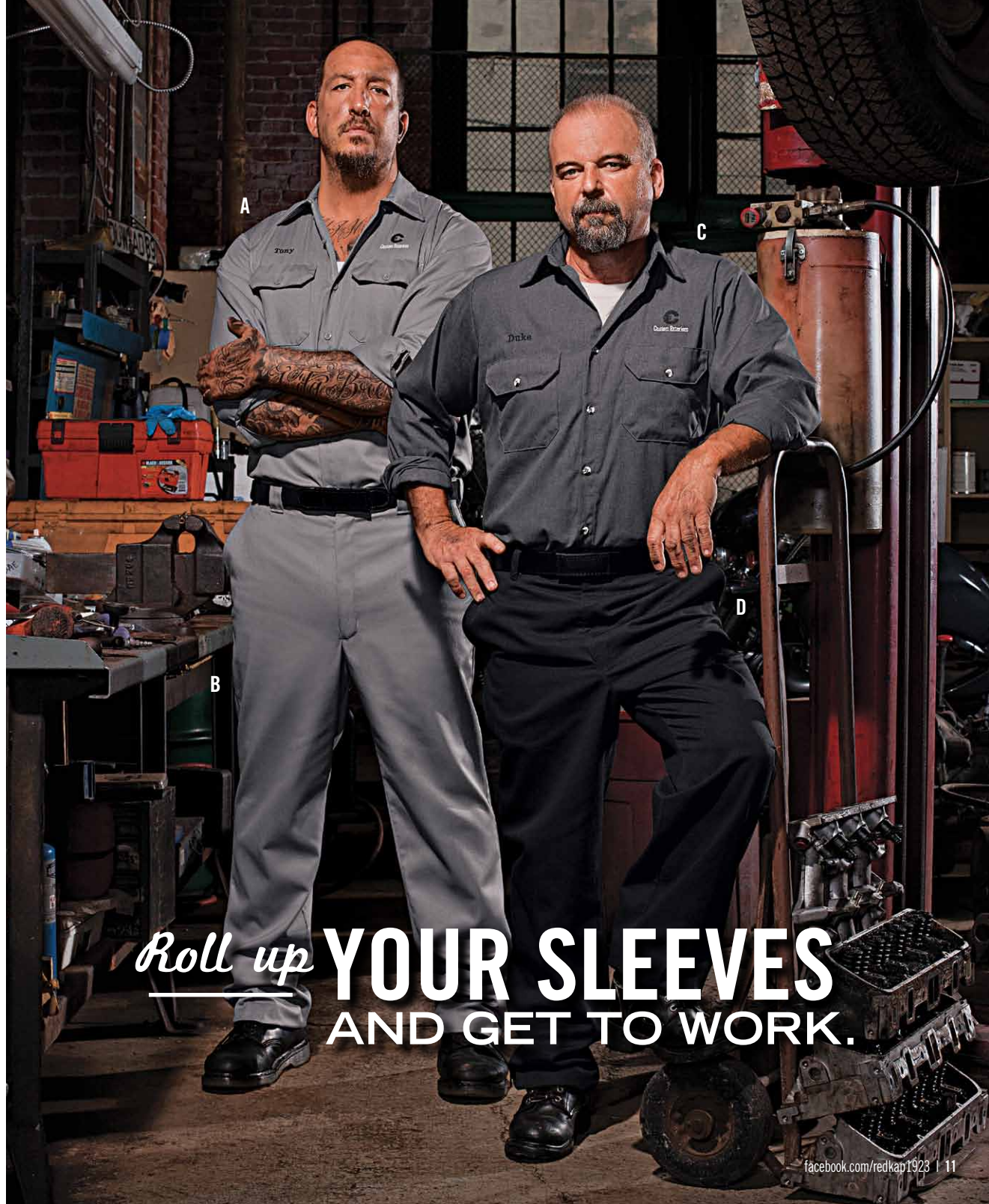
## D | CLASSIC AUTOMOTIVE PANT

A core industrial pant. With Touchtex™ technology and a comfortable relaxed fit, you can rest easy - not that you ever would.

7.5 oz. Twill, 65% Polyester / 35% Cotton

PT20 28-60.

BK black	BN brown	CH charcoal	KH khaki
NV navy	SG spruce green	WH white	



Roll up **YOUR SLEEVES**  
AND GET TO WORK.



# For those who **STAND TALL** AND WORK HARD.

Take a look under the hood of Red Kap pants. Touchtex™ technology stays clean and bright, wicks away moisture and keeps you cool. All models come standard with heavy-duty brass ratcheting zippers with a locking Triple Grip System and bartacks at stress points for extra reinforcements. These are some high-performance garments.

## **A | CELL PHONE POCKET PANT**

These pants have a specially designed pocket with a concealed closure placed on the side seam for easy access and comfort.

*7.5 oz. Twill, 65% Polyester / 35% Cotton*

**PT2C** 28-50. Available in black, charcoal, khaki and navy.

## **B | CELL PHONE POCKET SHORT**

Our 10" and 12" inseam shorts with Touchtex™ technology feature a unique cell phone pocket design so you can be reached without being interrupted.

*8 oz. Twill, 65% Polyester / 35% Cotton*

**PT4C** 28-50. Available in black and khaki.

*7.25 oz. Twill, 65% Polyester / 35% Cotton*

**PT4C** 28-50. Available in charcoal and navy.

## **C | 100% LEATHER BELT**

**AB12** S-XL. Available in black only.

## **D | WEBBED ADJUSTABLE BELT**

**AB14** S-XL. Available in black only.







#### **A | PERFORMANCE CARGO SHORT**

Built for the person who carries a lot of stuff, our 10" and 12" inseam cargo shorts with snap cargo pockets give you plenty of storage space.

*8 oz. Twill, 65% Polyester / 35% Cotton*

**PT66** 28-50. Available in black, khaki and navy.

#### **B | PERFORMANCE CARGO PANT**

Cargo pockets with snaps give you a reliable place to store the tools of your trade, and Touchtex™ technology keeps them clean and dry.

*8 oz. Twill, 65% Polyester / 35% Cotton*

**PT88** 28-44. Available in black, charcoal, khaki and navy.





A | CLASSIC FIT

B | RELAXED FIT

C | LOOSE FIT

D | DUNGAREE FIT

# *denim* DONE RIGHT.

## *Classic Fit*

This fit features a traditional rise that sits at the natural waist. Slim through the seat and thigh with a slimmer leg opening that will fit over work boots.

## *Relaxed Fit*

Our relaxed fit jeans feature a traditional rise that sits at the natural waist. Relaxed seat and thigh offer more room for mobility and the slightly tapered leg fits over work boots.

## *Loose Fit*

This fit features an updated rise that sits slightly below the natural waist. Full cut through the seat and thigh to offer maximum comfort and ease of movement. The straight leg fits over work boots.

## *Dungarees*

Our dungarees feature a loose fit with an updated rise that sits slightly below the natural waist. Full cut through seat and thigh for maximum comfort and ease of movement. Straight leg fits over work boots.



### A | CLASSIC FIT JEAN

Our 100% cotton heavyweight denim Classic Fit Jean sits on the natural waist and features rivets at stress points for extra reinforcement. Slimmer leg that fits over work boots.

13.75 oz. Heavyweight Denim, 100% Cotton

PD50 28-52.

DW dark stonewash

### B | RELAXED FIT JEAN

You don't have time to relax on the job, but our Relaxed Fit Jean with deep front pockets gives you room to breathe.

13.75 oz. Heavyweight Denim, 100% Cotton

PD60 28-54.

BW black PW prewashed SW stonewash

### C | LOOSE FIT JEAN

Timeless construction with a contemporary fit, the Loose Fit Jean is constructed with 100% cotton heavyweight denim for added strength and durability.

13.75 oz. Heavyweight Denim, 100% Cotton

PD70 28-52.

DW dark stonewash

### D | LOOSE FIT DUNGAREE

With a rule pocket on the right leg and a hammer loop on the left, our Loose Fit Denim Dungaree was made to work. And with triple-needle felled seams, busting a seam in them is nearly impossible.

13.75 oz. Heavyweight Denim, 100% Cotton

PD80 28-50.

PW prewashed SW stonewash





## CUSTOMIZATION

Jacket has been customized with black trim across chest and down the length of the sleeve.

A

B

# — *There's still* — A JOB TO DO, COME RAIN OR SHINE.

We know your approach to work—it's revving up and performing at your best no matter what rolls in. That's why we have your back with jackets that work right along with you. Choose the style that fits you best: hip or mid-length, classic or sporty—all in a variety of colors and fabrics.

## A | PERFORMANCE PANEL JACKET

Like you, this hip-length classic with permanent lining is ready for anything. The topstitched collar features sewn-in stays, and with a left sleeve utility pocket, your tools will always have a place.

7.25 oz. Twill, 65% Polyester / 35% Cotton

JT50 (Reg) S-6XL. (Long) M-5XL. (X Long) XL-3XL.

BK black

BN brown

CH charcoal

NV navy

SG spruce green

## B | COTTON BALL CAP

100% Cotton Twill

HT22 One size fits all.



BK black with silver reflective trim





C



D



E



F

## C | CLASSIC SLASH POCKET JACKET

With our permanently lined, waist-length core work jacket, you can handle whatever the job throws your way. A poly/cotton blend for comfort and a waist adjustment for flexibility help you get the job done.

7.25 oz. Twill, 65% Polyester / 35% Cotton

JT22 (Reg) S-4XL.

BK black	BN brown	CH charcoal	NV navy
SG spruce green			

## D | CREW JACKET

Rib knit collar, cuffs and waistband make this favorite a true team player. Versatile and ready for any job.

7.25 oz. Twill, 65% Polyester / 35% Cotton

JT38 (Reg) S-6XL. (Long) M-7XL.  
(X Long) XL-3XL.

BK black	CH charcoal	NV navy	SG spruce green
----------	-------------	---------	-----------------

## E | PERFORMANCE JACKET

This high-end, lightweight jacket feels great yet can stand up to the rigors of a typical work day. Imagine leaving the shop to meet some friends and actually being glad you still have on your work coat.

10.5 oz. Soft Shell

Shell: 92% Polyester / 8% Spandex

Lining: 100% Polyester Fleece

JP66 (Reg) S-4XL.

BK black	NV navy
----------	---------

## F | MOTORSPORTS JACKET

This jacket is sporty, strong and inspired by retail. The contemporary athletic fit of this water-resistant original features a soft finish, contrast color detailing and a drawstring bottom.

Shell Fabric: 100% Polyester Microfiber

Body Lining: 100% Polyester Tricot Mesh

Sleeve Lining: 100% Nylon

JM32 (Reg) S-4XL.

--	--

BC black / charcoal NK navy / khaki



A



B



### A | CLASSIC AUTOMOTIVE SHOP COAT

Look sharp around the garage with the four-pocket shop coat. The longer length and concealed gripper front keep dirt and grime off while you're on the job, and it's built for the industrial wash.

7.25 oz. Twill, 65% Polyester / 35% Cotton

KT30 (Reg) 36-58.

CH charcoal

NV navy

PB postman blue

WH bleached white

### B | BUTTON-FRONT CREW COVERALL

Our action-back styling offers a full range of motion. Whether you choose herringbone or solid colors, you'll be prepared with chest pockets, a rule leg pocket and a comfortable fit over clothes.

Herringbone: 10 oz. Twill, 100% Cotton

Solid colors: 8.5 oz. Twill, 100% Cotton

CC16 (Reg) 36-66. (Long) 40-52.

HB fisher herringbone

NV navy

PB postman blue

WH bleached white





— For those who —  
**LIKE BEING UP TO**  
**THEIR NECKS**  
**IN WORK.**

Whether you're out in the cold wind or leaning over a hot engine, we've got you covered. Neck to ankle. Red Kap coveralls are available in styles you can wear over pants and shirts, as well as styles more suited to indoor jobs. Each features functional pockets designed for the tools of your trade. Hip or mid-length, classic or sporty—all in a variety of colors and fabrics.

#### A | CLASSIC AUTOMOTIVE COVERALL

This coverall comes standard with action-back styling for full range of motion, hip and chest pockets, plus a handy right leg rule pocket.

7.25 oz. Twill, 65% Polyester / 35% Cotton

**CT10** Chest Pockets. (Reg) 34-62. (Long) 38-58.

**CT16** No Chest Pockets. (Reg) S-3XL.

BK black	BN brown	CH charcoal	EB electric blue	NV navy
OR orange	PB postman blue	SG spruce green	WH white	

#### B | SPEEDSUIT

Available in long or short sleeve, our speedsuit offers Touchtex™ technology and six pockets for easy storage. Its action back and elastic waist move quickly, and vented cuffs keep you cool while you rev up the engines.

5 oz. Poplin, 65% Polyester / 35% Cotton

**CP30** Short Sleeve. (Reg) S-3XL. (Long) M-XL.

**CP40** Long Sleeve. (Reg) S-4XL. (Long) M-2XL.

MB medium blue	NV navy	WH white
----------------	---------	----------



A



B



## DECORATE IT. MODIFY IT. CUSTOMIZE IT.

Red Kap offers a wide variety of ways to customize your automotive uniform. Our innovative Imagine It® program allows you to modify almost any garment we offer to create a look that's unique to your garage.

The garments shown here are just a few examples of what you can do through Imagine It®. Use them as inspiration to personalize your shop's customized look and then contact your uniform supplier for more information on how to place your order!

### A | SP24 CUSTOMIZATION

Start with any color of the SP24 work shirt and personalize yours by adding a two-color stripe detail to the sleeve and down the front. Choose any of the 4 color combinations shown here.

At left from top to bottom:

- SP24BK (black) with orange/white stripe
- SP24LB (light blue) with black/white stripe
- SP24CH (charcoal) with red/white stripe
- SP24RD (red) with royal blue/white stripe

### B | SP24 CUSTOMIZATION

For a racier version of a customized SP24 work shirt, add a traditional black/white check trim to accent the shoulders and sleeves.

Shirt colors shown at left are:

- SP24PB (postman blue)
- SP24CH (charcoal)
- SP24OR (orange)
- SP24SV (silver)



#### A | SP28BG CUSTOMIZATION

SP28BG (black / grey) takes on a new personality when orange / white detail stripe is added across the chest to complement the left chest logo.

#### B | JP66BK CUSTOMIZATION

The same trim added to the JP66BK (black) Soft Shell Jacket creates a great companion piece that lets people know you're part of the same team.





## A | SP24 CUSTOMIZATION

If protecting your project is a concern, modify any of our exposed button shirts with a front placket cover available in Navy, Black, Charcoal, Chocolate Brown, Light Grey or Red. Match them to your work shirt or get creative with a contrasting version like the ones shown here. We've also added a matching stripe across the chest and on the sleeve.

Top to bottom:

- SP24CB with red trim
- SP24KH with chocolate brown trim
- SP24CH with light grey trim
- SP24PB with navy trim

## B | SY20CR CUSTOMIZATION

Show your American colors by adding this Red/White/Blue stripe to the SY20CR (charcoal body/royal blue contrast). Personalize with your logo and and/or a name badge (many colors available) to finish the look!

## C | SP28BG CUSTOMIZATION

This SP28BG (black/grey) gets extra notice when reflective striping is added to the sleeves and front style lines. Looks great and gives you a safety edge as well.





# jackets

## A | JT40BC CUSTOMIZATION

Here the JT40BC (black /charcoal) duotone Team Jacket gets a custom look by adding a red /silver stripe across the chest.

## B | JT22BK CUSTOMIZATION

The JT22BK (black) is personalized by adding a red slanted stripe to the chest, which has been accented with silver piping.

**Note:** This design does not leave room for a left chest logo.

## C | VT22CH CUSTOMIZATION

If you like to keep your arms free, the VT22CH (charcoal) quilted vest may be just the right amount of coverage in cooler weather. This one has a 2" reflective silver stripe added across the chest, for enhanced visibility and a pretty cool look.

## D | JT36NV CUSTOMIZATION

The solid team jacket, JT36NV (navy), features enhanced visibility by adding the 2" reflective trim across the chest. A subtle, but noticeable blue stripe has been added to the shoulders.



A



B



C



D



Lincoln is a registered trademark of Ford Motor Company. Equus is a registered trademark of Hyundai Motor America. Infiniti is a registered trademark of Nissan Motor Co., Ltd. Acura is a registered trademark of Honda Motor Co. Mopar is a registered trademark of Chrysler Group LLC. Lexus is a registered trademark of Toyota Motor Corporation.

**CAUTION:** Garments contained in this catalog meet government flammability Class 1 requirements but do not provide protection from ignition sources, molten substances or chemical exposure. Special flame-resistant garments are available if required.

Product images and fabric swatches shown here are photomechanically reproduced. As a result, colors may vary from actual fabric samples.

© 2011 VF Imagewear, Inc.

Red Kap®, a division of  VF Imagewear, Inc.

REDKAP.COM // FACEBOOK.COM/REDKAP1923







# AUTOMOTIVE

---

## APPAREL GUIDE



TESTED RIGHT.  
DONE RIGHT.





DONE RIGHT.™







## THE WORLD LEADER IN AUTOMOTIVE APPAREL

Since 1923, Red Kap has been creating comfortable, durable workwear for the “done right” crowd. We know they need to get plenty of mileage out of their workwear. With our history, expertise and understanding of the automotive industry, we’ve developed uniform programs for most of the world’s great automotive companies. Our garments are designed to withstand the unique conditions of the automotive industry. We use industrial-grade buttons, stain-resistant technology and fabric tough enough to stand up to industrial laundering.

The Red Kap label means details that help the automotive worker get the job done right—extra touches like covered plackets to keep buttons from scratching a gleaming finish and straight hems to keep you looking sharp. No wonder Red Kap is the world leader in automotive apparel. After all, we know what it takes to get a job done right. The right workwear. And a generous helping of elbow grease.

ACURA

Audi

EQUUS®

Ford

HONDA

HYUNDAI

INFINITI

LINCOLN®

LEXUS®

MAZDA

Mercedes-Benz

MINI

MOPAR®

NISSAN

Quick Lane

SUBARU

TOYOTA

Volkswagen

VOLVO





DONE RIGHT.™



## WHY RED KAP?

Red Kap provides automotive workwear in a wide array of sizes and colors, with enough customization options to build a complete workwear program. With our wide range of products and industry-specific details, you know you're not just getting a new garment ... you're getting a garment done right.



Through our Imagine It® program, we take customization to a new level. Whether you need embroidery, name patches, or striping, Imagine It® makes it easy to customize the entire crew. Good work speaks for itself, and customization speaks for your company.



VF Imagewear, Inc.

NAUTICA

THE  
NORTH  
FACE

VANS

Wrangler

JANSPORT®

Lee®

## WHO IS VF IMAGEWEAR?

VF Imagewear is the leading supplier of apparel for the work force. We deliver outstanding customer service experiences through our services platform, innovative products and compelling brands. Plus, we're a division of VF Corporation, the world's leading supplier of branded apparel. With brands like Wrangler®, Lee®, The North Face®, Nautica®, Jansport® and Vans® just to name a few, we know what it takes to outfit a workforce of 16 million.



# nuts and bolts

It's more than just hard-working workwear. The Red Kap automotive collection is designed for the work you do everyday in the shop, under the hood, behind the wheel. Stronger seams. More durable fabrics. Pockets in just the right places. With so many features that get the job done right, our automotive workwear does everything but drive.

## SHIRTS



### SmartPlacket

Buttons stay neatly hidden so your car's paint job stays polished and protected. That's more than smart – it's genius.

### Hex Pocket

Corner-free pockets resist dirt and lint buildup. Strategically placed bartacks add extra strength to prevent rips. The only thing you'll have to patch is a tire.

### Versa Hem

A straight bottom hem offers a versatile fit with maximum comfort and style, whether it's a tucked in or tucked out kind of day.

## PANTS



### Triple Grip System

With the zipper locked in place, on track and reinforced with bartacks, you can straighten up and fly right.

### Roll Stop

With a waistband designed to lie flat and hold its shape, you stay comfortable and polished from the first engine to the last transmission.



## ALL PRODUCTS



### DuraSeams

Double-stitched seams provide maximum strength. Go ahead, run on all cylinders.

### SewStrong

Bartacks with angled stitching take the strain to prevent rips. Because you'd rather be in the shop than at the tailor.

### Fabric

Touchtex™ Technology with soil release keeps garments clean, moisture wicking keeps you dry and cool, and wrinkle resistant options give you one less thing to worry about.

## TESTED RIGHT. DONE RIGHT.

Every Red Kap garment must pass rigorous testing for proof of excellence in design, engineering and construction. That's the done right guarantee.



# *Fit for the* **WHOLE CREW.**

Our Crew Shirt may be new to you, but it's no stranger to hard work. Field tested for durability and comfort, it's been proven to have everything it takes to get the job **DONE RIGHT**.



the crew shirt

- A** | **New Industrial Laundry Ripstop fabric** stays cool while looking sharp
- B** | Our **SmartPlacket** keeps any paint job protected
- C** | **Color block design** masks stains from the toughest of jobs
- D** | **Button-through pockets** keep items in place
- E** | **Versa hem** makes an untucked shirt look professional
- F** | **Storage utility pocket** with double pencil stall is an unexpected bonus
- G** | **Hex-style pockets** reduce lint and dirt collection
- H** | **Sewn-in collar stays** reinforce a polished look
- I** | **Moisture wickable, soil release and superior color retention** make this shirt fit for any crew



## CREW SHIRT

4.25 oz., 65% Polyester / 35% Cotton Ripstop Texture

**SY20** Short Sleeve. (Reg) S-3XL. (Long) L-2XL.

**SY10** Long Sleeve. (Reg) M-3XL. (Long) L-2XL.

<b>CG</b> charcoal body / grey contrast	<b>CR</b> charcoal body / royal blue contrast	<b>BR</b> black body / red contrast	<b>BC</b> black body / charcoal contrast



# Ready for the track, AND THE GARAGE.



the motorsports shirt

Grease, oil and dirt don't stand a chance against our Touchtex™ Technology, and the color block styling is classic automotive.

- A** | **Durable fabric** constructed to hold color wash after wash
- B** | **Wickable fabric** moves perspiration away from the body
- C** | **Abrasion-resistant fabric** stays smooth and pill ball free to maintain a professional image
- D** | With **wrinkle-resistant fabric** – just wash, hang and wear
- E** | **Permanent collar stays** for a crisp appearance
- F** | **Longer body length** keeps shirt tucked in and crew looking professional
- G** | **Button-thru pockets** keep personal items in check
- H** | **Side color panels** provide a slimming, athletic look for various body types
- I** | **Unique shoulder color block design** for a more modern look



## MOTORSPORTS SHIRT

4.25 oz. Poplin, 65% Polyester / 35% Cotton

SP28 Short Sleeve. (Reg) S-5XL. (Long) M-3XL.

SP18 Long Sleeve. (Reg) S-5XL. (Long) M-3XL.



BG black body /  
grey contrast

RN navy body /  
red contrast

NP navy body /  
postman blue contrast



## A | PERFORMANCE TECH SHIRT

A banded collar with sewn-in stays knows its place, while Touchtex™ technology puts the brakes on dirt and grease.

4.25 oz. Poplin, 65% Polyester / 35% Cotton

**SP24GM** Short Sleeve. (Reg) S-3XL.

**SP14GM** Long Sleeve. (Reg) S-3XL. (Long) M-2XL.

## B | TECH SHIRT

A classic. Touchtex™ technology keeps your shirt clean while you get your hands dirty.

4.25 oz. Poplin, 65% Polyester / 35% Cotton

**SP24AC** Short Sleeve. (Reg) S-4XL. (Long) M-3XL.

**SP14AC** Long Sleeve. (Reg) S-4XL. (Long) M-4XL.

## C | CLASSIC AUTO SHIRT

Choose from 21 colors. Touchtex™ technology means you'll look clean, no matter how greasy the job. A left pocket pencil stall keeps you ready for action.

4.25 oz. Poplin, 65% Polyester / 35% Cotton

**SP24** Short Sleeve. (Reg) S-6XL. (Long) M-5XL.

Sizes vary by color.

**SP14** Long Sleeve. (Reg) S-4XL. (Long) M-5XL.

Sizes vary by color.

<b>BK</b> black	<b>BY</b> burgundy	<b>CB</b> chocolate brown	<b>CH</b> charcoal
<b>DB</b> dark blue	<b>GY</b> grey	<b>KK</b> khaki	<b>LA</b> light grey
<b>LB</b> light blue	<b>LG</b> light green	<b>LT</b> light tan	<b>MB</b> petrol blue
<b>NV</b> navy	<b>OR</b> orange	<b>PB</b> postman blue	<b>RB</b> royal blue
<b>RD</b> red	<b>SG</b> spruce green	<b>SV</b> silver grey	<b>WH</b> white
<b>YE</b> yellow			

## D | WRINKLE-RESISTANT AUTO SHIRT

Play it straight in a shirt that won't wrinkle under pressure. Classic styling with a button front, two functional pockets and left pocket pencil stall keep this shirt working hard all day.

6 oz. Twill, 100% Wrinkle-resistant Cotton

**SC40** Short Sleeve. (Reg) S-4XL. (Long) L-4XL.

**SC30** Long Sleeve. (Reg) S-5XL. (Long) L-2XL.

(X Long) L-4XL.

<b>DN</b> dark navy	<b>GG</b> graphite gray	<b>KH</b> khaki	<b>LB</b> light blue
<b>NV</b> navy	<b>OR</b> orange	<b>PB</b> postman blue	<b>SG</b> spruce green
<b>WH</b> white			





## A | TEAM SHIRT

A true work shirt with pocket flaps and left pocket pencil stall, this popular style also offers a pre-cure durable press for less ironing and creates a great look when paired with our Team Pant.

5.25 oz. Twill, 65% Polyester / 35% Cotton

ST62 Short Sleeve. (Reg) S-4XL.

ST52 Long Sleeve. (Reg) S-4XL. (Long) L-2XL.

## B | TEAM PANT

Our Team Pant perfectly matches our Team Shirt and comes in six different colors.

8.5 oz. Twill, 65% Polyester / 35% Cotton

PT62 28-56.

Available colors for Team Shirt and Team Pant.

BK black	CH charcoal	KH khaki	NV navy
OG olive green	SV silver		

## C | HEATHERED TECH SHIRT

Clean and crisp meet durability. Pocket flaps and tortoise shell buttons accent a pressed finish that requires less ironing.

4.25 oz. Heathered Poplin, 65% Polyester / 35% Cotton

SH20 Short Sleeve. (Reg) S-3XL.

SH10 Long Sleeve. (Reg) S-3XL. (Long) L-2XL.



CH charcoal NV navy

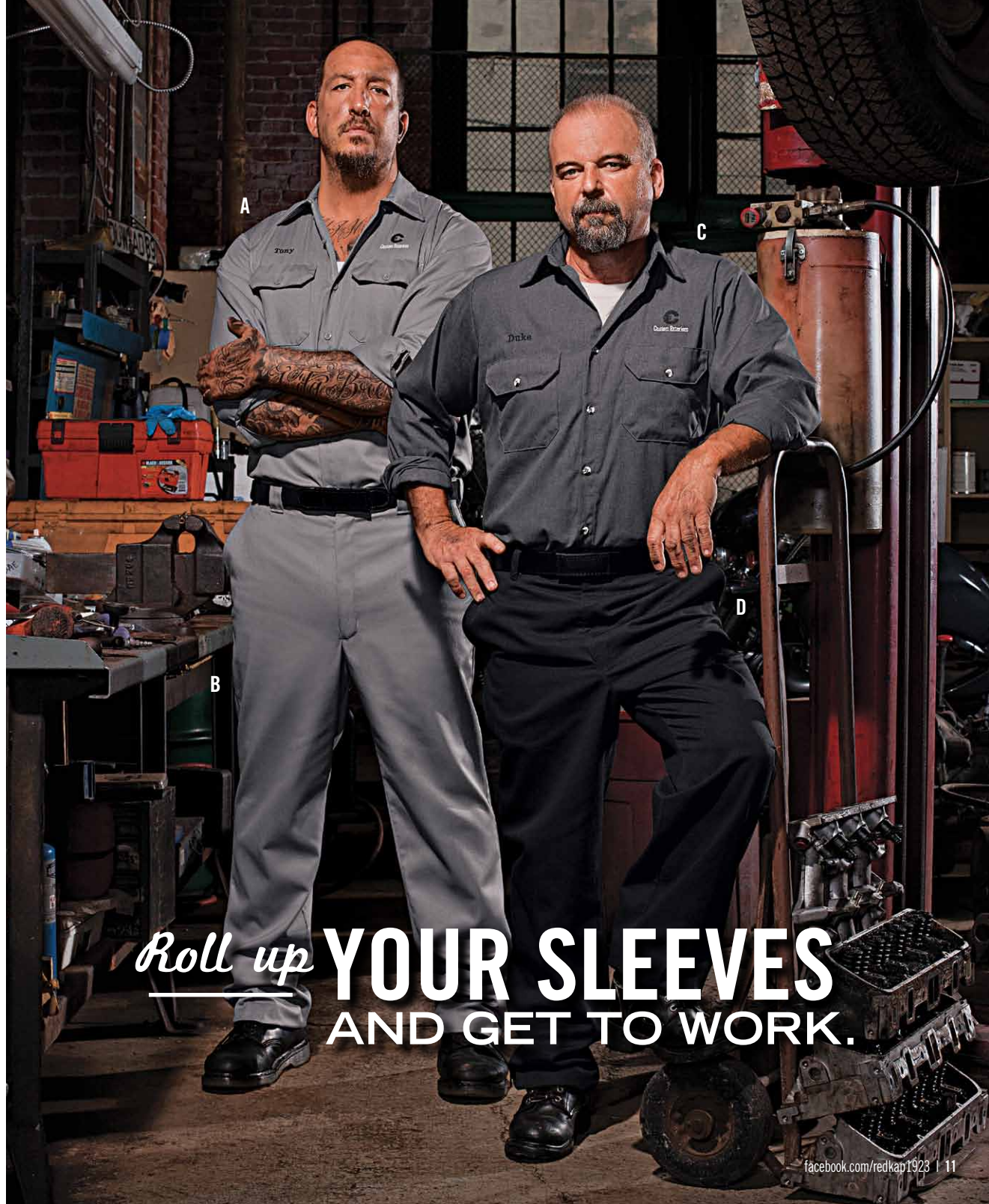
## D | CLASSIC AUTOMOTIVE PANT

A core industrial pant. With Touchtex™ technology and a comfortable relaxed fit, you can rest easy - not that you ever would.

7.5 oz. Twill, 65% Polyester / 35% Cotton

PT20 28-60.

BK black	BN brown	CH charcoal	KH khaki
NV navy	SG spruce green	WH white	



*Roll up* **YOUR SLEEVES**  
**AND GET TO WORK.**



# For those who **STAND TALL** AND WORK HARD.

Take a look under the hood of Red Kap pants. Touchtex™ technology stays clean and bright, wicks away moisture and keeps you cool. All models come standard with heavy-duty brass ratcheting zippers with a locking Triple Grip System and bartacks at stress points for extra reinforcements. These are some high-performance garments.

## **A | CELL PHONE POCKET PANT**

These pants have a specially designed pocket with a concealed closure placed on the side seam for easy access and comfort.

*7.5 oz. Twill, 65% Polyester / 35% Cotton*

**PT2C** 28-50. Available in black, charcoal, khaki and navy.

## **B | CELL PHONE POCKET SHORT**

Our 10" and 12" inseam shorts with Touchtex™ technology feature a unique cell phone pocket design so you can be reached without being interrupted.

*8 oz. Twill, 65% Polyester / 35% Cotton*

**PT4C** 28-50. Available in black and khaki.

*7.25 oz. Twill, 65% Polyester / 35% Cotton*

**PT4C** 28-50. Available in charcoal and navy.

## **C | 100% LEATHER BELT**

**AB12** S-XL. Available in black only.

## **D | WEBBED ADJUSTABLE BELT**

**AB14** S-XL. Available in black only.







A



B

#### **A | PERFORMANCE CARGO SHORT**

Built for the person who carries a lot of stuff, our 10" and 12" inseam cargo shorts with snap cargo pockets give you plenty of storage space.

*8 oz. Twill, 65% Polyester / 35% Cotton*

**PT66** 28-50. Available in black, khaki and navy.

#### **B | PERFORMANCE CARGO PANT**

Cargo pockets with snaps give you a reliable place to store the tools of your trade, and Touchtex™ technology keeps them clean and dry.

*8 oz. Twill, 65% Polyester / 35% Cotton*

**PT88** 28-44. Available in black, charcoal, khaki and navy.





A | CLASSIC FIT

B | RELAXED FIT

C | LOOSE FIT

D | DUNGAREE FIT

# *denim* DONE RIGHT.

## *Classic Fit*

This fit features a traditional rise that sits at the natural waist. Slim through the seat and thigh with a slimmer leg opening that will fit over work boots.

## *Relaxed Fit*

Our relaxed fit jeans feature a traditional rise that sits at the natural waist. Relaxed seat and thigh offer more room for mobility and the slightly tapered leg fits over work boots.

## *Loose Fit*

This fit features an updated rise that sits slightly below the natural waist. Full cut through the seat and thigh to offer maximum comfort and ease of movement. The straight leg fits over work boots.

## *Dungarees*

Our dungarees feature a loose fit with an updated rise that sits slightly below the natural waist. Full cut through seat and thigh for maximum comfort and ease of movement. Straight leg fits over work boots.



## A | CLASSIC FIT JEAN

Our 100% cotton heavyweight denim Classic Fit Jean sits on the natural waist and features rivets at stress points for extra reinforcement. Slimmer leg that fits over work boots.

13.75 oz. Heavyweight Denim, 100% Cotton

PD50 28-52.

DW dark stonewash

## B | RELAXED FIT JEAN

You don't have time to relax on the job, but our Relaxed Fit Jean with deep front pockets gives you room to breathe.

13.75 oz. Heavyweight Denim, 100% Cotton

PD60 28-54.

BW black

PW prewashed

SW stonewash

## C | LOOSE FIT JEAN

Timeless construction with a contemporary fit, the Loose Fit Jean is constructed with 100% cotton heavyweight denim for added strength and durability.

13.75 oz. Heavyweight Denim, 100% Cotton

PD70 28-52.

DW dark stonewash

## D | LOOSE FIT DUNGAREE

With a rule pocket on the right leg and a hammer loop on the left, our Loose Fit Denim Dungaree was made to work. And with triple-needle felled seams, busting a seam in them is nearly impossible.

13.75 oz. Heavyweight Denim, 100% Cotton

PD80 28-50.

PW prewashed

SW stonewash



PD80SW | stonewash

PD50DW | dark stonewash

PD80PW | prewashed



## CUSTOMIZATION

Jacket has been customized with black trim across chest and down the length of the sleeve.

A

B

# — *There's still* — A JOB TO DO, COME RAIN OR SHINE.

We know your approach to work—it's revving up and performing at your best no matter what rolls in. That's why we have your back with jackets that work right along with you. Choose the style that fits you best: hip or mid-length, classic or sporty—all in a variety of colors and fabrics.

## A | PERFORMANCE PANEL JACKET

Like you, this hip-length classic with permanent lining is ready for anything. The topstitched collar features sewn-in stays, and with a left sleeve utility pocket, your tools will always have a place.

7.25 oz. Twill, 65% Polyester / 35% Cotton

JT50 (Reg) S-6XL. (Long) M-5XL. (X Long) XL-3XL.

BK black

BN brown

CH charcoal

NV navy

SG spruce green

## B | COTTON BALL CAP

100% Cotton Twill

HT22 One size fits all.



BK black with silver reflective trim





C



D



E



F

## C | CLASSIC SLASH POCKET JACKET

With our permanently lined, waist-length core work jacket, you can handle whatever the job throws your way. A poly/cotton blend for comfort and a waist adjustment for flexibility help you get the job done.

7.25 oz. Twill, 65% Polyester / 35% Cotton

JT22 (Reg) S-4XL.

BK black	BN brown	CH charcoal	NV navy
SG spruce green			

## D | CREW JACKET

Rib knit collar, cuffs and waistband make this favorite a true team player. Versatile and ready for any job.

7.25 oz. Twill, 65% Polyester / 35% Cotton

JT38 (Reg) S-6XL. (Long) M-7XL.  
(X Long) XL-3XL.

BK black	CH charcoal	NV navy	SG spruce green
----------	-------------	---------	-----------------

## E | PERFORMANCE JACKET

This high-end, lightweight jacket feels great yet can stand up to the rigors of a typical work day. Imagine leaving the shop to meet some friends and actually being glad you still have on your work coat.

10.5 oz. Soft Shell

Shell: 92% Polyester / 8% Spandex

Lining: 100% Polyester Fleece

JP66 (Reg) S-4XL.

BK black	NV navy
----------	---------

## F | MOTORSPORTS JACKET

This jacket is sporty, strong and inspired by retail. The contemporary athletic fit of this water-resistant original features a soft finish, contrast color detailing and a drawstring bottom.

Shell Fabric: 100% Polyester Microfiber

Body Lining: 100% Polyester Tricot Mesh

Sleeve Lining: 100% Nylon

JM32 (Reg) S-4XL.

--	--

BC black / charcoal NK navy / khaki



A



B



### A | CLASSIC AUTOMOTIVE SHOP COAT

Look sharp around the garage with the four-pocket shop coat. The longer length and concealed gripper front keep dirt and grime off while you're on the job, and it's built for the industrial wash.

7.25 oz. Twill, 65% Polyester / 35% Cotton

KT30 (Reg) 36-58.

CH charcoal

NV navy

PB postman blue

WH bleached white

### B | BUTTON-FRONT CREW COVERALL

Our action-back styling offers a full range of motion. Whether you choose herringbone or solid colors, you'll be prepared with chest pockets, a rule leg pocket and a comfortable fit over clothes.

Herringbone: 10 oz. Twill, 100% Cotton

Solid colors: 8.5 oz. Twill, 100% Cotton

CC16 (Reg) 36-66. (Long) 40-52.

HB fisher herringbone

NV navy

PB postman blue

WH bleached white





— For those who —  
**LIKE BEING UP TO**  
**THEIR NECKS**  
**IN WORK.**

Whether you're out in the cold wind or leaning over a hot engine, we've got you covered. Neck to ankle. Red Kap coveralls are available in styles you can wear over pants and shirts, as well as styles more suited to indoor jobs. Each features functional pockets designed for the tools of your trade. Hip or mid-length, classic or sporty—all in a variety of colors and fabrics.

#### A | CLASSIC AUTOMOTIVE COVERALL

This coverall comes standard with action-back styling for full range of motion, hip and chest pockets, plus a handy right leg rule pocket.

7.25 oz. Twill, 65% Polyester / 35% Cotton

**CT10** Chest Pockets. (Reg) 34-62. (Long) 38-58.

**CT16** No Chest Pockets. (Reg) S-3XL.

<b>BK</b> black	<b>BN</b> brown	<b>CH</b> charcoal	<b>EB</b> electric blue	<b>NV</b> navy
<b>OR</b> orange	<b>PB</b> postman blue	<b>SG</b> spruce green	<b>WH</b> white	

#### B | SPEEDSUIT

Available in long or short sleeve, our speedsuit offers Touchtex™ technology and six pockets for easy storage. Its action back and elastic waist move quickly, and vented cuffs keep you cool while you rev up the engines.

5 oz. Poplin, 65% Polyester / 35% Cotton

**CP30** Short Sleeve. (Reg) S-3XL. (Long) M-XL.

**CP40** Long Sleeve. (Reg) S-4XL. (Long) M-2XL.

<b>MB</b> medium blue	<b>NV</b> navy	<b>WH</b> white
-----------------------	----------------	-----------------



A



B



## DECORATE IT. MODIFY IT. CUSTOMIZE IT.

Red Kap offers a wide variety of ways to customize your automotive uniform. Our innovative Imagine It® program allows you to modify almost any garment we offer to create a look that's unique to your garage.

The garments shown here are just a few examples of what you can do through Imagine It®. Use them as inspiration to personalize your shop's customized look and then contact your uniform supplier for more information on how to place your order!

### A | SP24 CUSTOMIZATION

Start with any color of the SP24 work shirt and personalize yours by adding a two-color stripe detail to the sleeve and down the front. Choose any of the 4 color combinations shown here.

At left from top to bottom:

- SP24BK (black) with orange/white stripe
- SP24LB (light blue) with black/white stripe
- SP24CH (charcoal) with red/white stripe
- SP24RD (red) with royal blue/white stripe

### B | SP24 CUSTOMIZATION

For a racier version of a customized SP24 work shirt, add a traditional black/white check trim to accent the shoulders and sleeves.

Shirt colors shown at left are:

- SP24PB (postman blue)
- SP24CH (charcoal)
- SP24OR (orange)
- SP24SV (silver)



#### A | SP28BG CUSTOMIZATION

SP28BG (black / grey) takes on a new personality when orange / white detail stripe is added across the chest to complement the left chest logo.

#### B | JP66BK CUSTOMIZATION

The same trim added to the JP66BK (black) Soft Shell Jacket creates a great companion piece that lets people know you're part of the same team.



A



B



## A | SP24 CUSTOMIZATION

If protecting your project is a concern, modify any of our exposed button shirts with a front placket cover available in Navy, Black, Charcoal, Chocolate Brown, Light Grey or Red. Match them to your work shirt or get creative with a contrasting version like the ones shown here. We've also added a matching stripe across the chest and on the sleeve.

Top to bottom:

- SP24CB with red trim
- SP24KH with chocolate brown trim
- SP24CH with light grey trim
- SP24PB with navy trim

## B | SY20CR CUSTOMIZATION

Show your American colors by adding this Red/White/Blue stripe to the SY20CR (charcoal body/royal blue contrast). Personalize with your logo and and/or a name badge (many colors available) to finish the look!

## C | SP28BG CUSTOMIZATION

This SP28BG (black/grey) gets extra notice when reflective striping is added to the sleeves and front style lines. Looks great and gives you a safety edge as well.





# jackets

## A | JT40BC CUSTOMIZATION

Here the JT40BC (black /charcoal) duotone Team Jacket gets a custom look by adding a red /silver stripe across the chest.

## B | JT22BK CUSTOMIZATION

The JT22BK (black) is personalized by adding a red slanted stripe to the chest, which has been accented with silver piping.

**Note:** This design does not leave room for a left chest logo.

## C | VT22CH CUSTOMIZATION

If you like to keep your arms free, the VT22CH (charcoal) quilted vest may be just the right amount of coverage in cooler weather. This one has a 2" reflective silver stripe added across the chest, for enhanced visibility and a pretty cool look.

## D | JT36NV CUSTOMIZATION

The solid team jacket, JT36NV (navy), features enhanced visibility by adding the 2" reflective trim across the chest. A subtle, but noticeable blue stripe has been added to the shoulders.



A



B



C



D



Lincoln is a registered trademark of Ford Motor Company. Equus is a registered trademark of Hyundai Motor America. Infiniti is a registered trademark of Nissan Motor Co., Ltd. Acura is a registered trademark of Honda Motor Co. Mopar is a registered trademark of Chrysler Group LLC. Lexus is a registered trademark of Toyota Motor Corporation.

**CAUTION:** Garments contained in this catalog meet government flammability Class 1 requirements but do not provide protection from ignition sources, molten substances or chemical exposure. Special flame-resistant garments are available if required.

Product images and fabric swatches shown here are photomechanically reproduced. As a result, colors may vary from actual fabric samples.

© 2011 VF Imagewear, Inc.

Red Kap®, a division of



VF Imagewear, Inc.

REDKAP.COM // FACEBOOK.COM/REDKAP1923

